



*Bringing you...*

# DRINKS LIST

Extensive range of seasonal beer, craft gins and premium drinks

*Richard & The Team  
Would like to welcome you to...*



The Plough Inn  
Northfields

OUR DRINKS LIST IS COMPILED OF PRODUCTS WE WOULD LIKE TO STOCK. SOME PRODUCTS MAY OCCASIONALLY BE UNAVAILABLE BUT WE ARE HAPPY TO HELP YOU FIND AN ALTERNATIVE.

IF YOU REQUIRE INFORMATION REGARDING THE PRESENCE OF ALLERGENS IN ANY OF OUR FOOD OR DRINK, PLEASE ASK YOUR SERVER WHO WILL BE HAPPY TO PROVIDE THIS INFORMATION. WHILST A DISH MAY NOT CONTAIN A SPECIFIC ALLERGEN, DUE TO THE WIDE RANGE OF INGREDIENTS USED IN OUR KITCHEN FOODS MAY BE AT RISK OF CROSS CONTAMINATION BY OTHER INGREDIENTS.

# DRAUGHT BEERS & CIDER

## KEG

### FRONTIER 4.5% £5.90

CHISWICK. Pours a bright golden colour & immediately offers up delicious fruit flavours delivering distinctive notes of citrus, passion fruit & melon.

### PERONI 5.1% £6.45

ROME. The original Italian lager. Peroni is brewed using spring barley malts and hops to create a refreshing smooth flavour.

### AMSTEL 4.1% £5.20

AMSTERDAM. Fresh tasting & smooth. This exceptional beer has been brewed & imported directly from Amsterdam for 130 years.

### ASAHI 5% £6.55

TOKYO. Crisp and clean. A 'super dry' lager. One of Japan's finest beers.

### GUINNESS EXTRA COLD 5% £6.05

DUBLIN. Initial low to medium malt sweetness with a degree of caramel, chocolate & roasted coffee flavour with a distinctive dry roasted bitterness in the finish.

### CORNISH GOLD CIDER 4.5% £5.65

CORNWALL. An immensely refreshing & creative blend of bittersweet & dessert apples with light Champagne sparkle, fruity apple tones & a long-dry finish.

## CASK ALE

### LONDON PRIDE 4.1% £5.05

CHISWICK. Rich & smooth, London Pride has a good malty base with a blend of hop character, easy drinking with great body & a fruity, satisfying finish.

### SEAFARERS 3.6% £4.60

CHISWICK. Launched in support of the UK's leading maritime charity, Gales Seafarers made its maiden voyage in 2005. A crisp, light and quenching amber ale, it continues to be the easiest, most refreshing charity work you'll ever do.

### ROTATING SEASONAL BEERS & GUEST ALES.

WE ROTATE OUR RANGE OF  
SEASONAL BEER RANGE AND  
GUEST ALES, PLEASE ASK WHAT'S  
ON TAP THIS WEEK!



# PLANNING A FUNCTION?

We could be the perfect establishment for your function. From booking the lovely bar area, beautiful dining room and our fantastic covered and heated decking area outside.

With four different food options and an easy booking form, simply tell us what you're looking for and we'll do the rest.

We can cater to all your occasions, ask us about planning your event today...



Large buffet menu  
including BBQ



Birthdays



weddings



Christenings



WORK PARTIES



Wakes

# What's on...



ALWAYS WISHING THE WEEKEND WAS LONGER? WELL SAY  
HELLO TO ACOUSTIC THURSDAYS! WE'RE BRINGING YOU LIVE  
MUSIC EVERY SINGLE WEEK, WITH NEW ARTISTS EVERY WEEK!  
WE HAVE A HUGE LINE UP, SO DON'T MISS OUT...



STEAK NIGHT  
EVERY WEDNESDAY FROM 6PM

The more ounces your table orders, the  
more money off your bottle of wine...

# BOTTLED BEER, CANS & CIDER

## FULLERS

**1845 6.3% £5.20**

A strong, rich and fruity ale, Fuller's 1845 was specially commissioned to celebrate 150 years of the Fuller, Smith and Turner partnership.

**BENGAL LANCER 5.3% £5.20**

Inspired by the classic India Pale Ale of times gone, Fuller's Bengal Lancer redefines Eastern promise. With a full-bodied flavour and spicy character, it's an IPA that grabs the reins and leads from the front.

**ORGANIC HONEY DEW 5.3% £5.60**

The UK's best-selling organic beer, Honey Dew buzzes with a zesty edge and subtle sweetness. Approved by the Soil Association, it's a thing on natural beauty - pure golden sunshine in a glass.

**ESB 5.9% £5.20**

Twice named World Champion Beer, Fuller's ESB is one of the most decorated ales of its time. A winner born and brewed, it's a strong, full-bodied ale that has delighted drinkers for decades with its smooth, mellow bitterness and superbly satisfying finish.

**VINTAGE ALE 8.5% £6.00**

At its heart, Pale Ale and Caragold malts combine with Double Roasted Crystal, to deliver a toffee and raisin sweetness. Plummy tones, with a hint of tropical and orange notes. All complemented, as ever, by the zesty marmalade character of our famous Fuller's yeast.

## WHEAT BEER

**ERDINGER WEISSBIER 5.3% £5.35**

GERMANY. The well known wheat beer. Cloudy and full bodied, with notes of light lemon fruitiness.

**SCHNEIDER WEISSE 5.4% £5.65**

GERMANY. Pouring hazy amber, beneath this full-bodied Bavarian wheat beer's fluffy white head you'll find notes of bread yeast, banana and clove along with nutmeg and a touch of fruitiness.

## ALES

**BACCHUS FRAMBOZENBIER 5.0% £6.50**

BELGIUM. A light and refreshing drink with a spritzy tartness, the cherry fruit is added to give an intensely fruity beer. The half champagne sized bottles are paper wrapped.

**HITACHINO NEST 7.0% £6.30**

JAPAN. Japanese classic ale.

**MC CHOUFFE 8% £7.00**

BELGIUM. Inspired by Scotch Ale dark and high fermentation. Spicy aniseed and liquorice.

## LAGER

**PERONI 5.1% £4.95**

ITALY. The great classic Italian beer.

**PILSNER URQUELL 4.4% £5.00**

CZECH REP. Classic Czech beer, medium sweetness balanced with medium bitterness, smooth and refreshing.

**BROOKLYN LAGER 5.2% £5.20**

AMERICA. Amber-gold in colour, refreshing bitterness and floral hop aroma with hints of caramel.

**ASAHI 5.2% £5.10**

JAPAN. Amber-gold in colour, refreshing bitterness and floral hop aroma. Caramel malts in the finish.

**ESTRELLA DAMM INEDIT 4.8% £5.65**

SPAIN. Brewed with spices, Crafted by Ferran Adria - The World's Most Award-Winning Chef and the Damm Brewmasters.

**BUDVAR PILSNER 4.8% £4.95**

CZECH. Brewed with whole cone saaz hops, moravian malt and natural soft water in Budweis, Czech Republic.

**SOL 4.2 % £5.00**

MEXICO. When you open a Sol, you are tapping into the sun's positive energy; the energy that is the true spirit of Mexico. So, next time you and your friends are enjoying a refreshing Sol, enjoy the sun.

# BOTTLED BEER, CANS & CIDER

## IPA & APA

**TINY REBEL CLUB TROPICANA** £5.30  
5.5%

WALES. This is what happens when you slice PINEAPPLES, squeeze MANGOS, crush PEACHES and pummel PASSIONFRUIT into an IPA.

**BRIXTON APA 5.4%** £5.30

ENGLAND. Crisp and juicy American Pale Ale with bright flavours of citrus and tropical fruits.

**BREWDOG HAZY JANE 5.0%** £6.30

ENGLAND. New England detuned. This full-tilt fruit machine of an IPA packs all the flavour but less of the alcohol. Notes of pineapple, mango, stone-fruit, and a hint of tangerine to mix it up.

**VEDETT 5.5%** £5.35

NOT FROM INDIA. Fresh, fruity and floral notes give way to touches of caramel sweetness, while its superb, lingering aftertaste continues to tantalise the tastebuds long after. Here's to a great-tasting, refreshing beer!

## STOUT

**PEANUT BUTTER MILK STOUT** £6.05  
5.8%

AMERICA. The name says it, but the taste is everything. Rich, creamy, velvety, delicious.

## CIDER

**OLD MOUNT BERRIES & CHERRIES** £5.95  
4.0%

UK. This tasty tippie occurred when our crisp apples met their match with a handful of ripe berries and cherries.

**OLD MOUNT KIWI & LIME 4.0%** £5.95

UK. The ingenious pairing of aromatic kiwi and zingy lime. Mixed with cider, these natural partners create a unique combination.

## GLUTEN FREE

**JUBEL 4%** £5.65

ENGLAND. A lively lager that packs a fruity punch. This nectar drips with juicy peaches that will delete your thirst. A dangerously refreshing drop with a clean lager finish that leaves you wanting more. Vegan and Gluten Free.

**PERONI GLUTEN FREE 5.1%** £4.95

ITALY. The great classic Italian beer, also serving the Peroni but free from gluten.

**BREWDOG PUNK IPA GF 5.4%** £5.15

SCOTLAND. BOLD. HOPPY. TROPICAL. Punk IPA is the beer that kick-started a beer revolution. Now available in gluten free after 15 years. Light, golden classic with bursts of caramel and tropical fruit.

## LOW & NO

**HEINEKEN 0.0 0.0%** £3.65

NETHERLANDS. The well known beer, just free from alcohol.

**ERDINGER ALKOHOLFREI 0.5%** £4.95

GERMANY. A great alcohol free beer, that is full of flavour.

**BIG DROP PINE TRAIL PALE ALE** £3.65  
0.5%

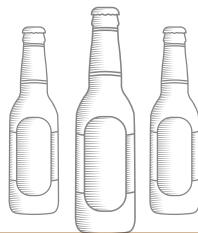
ENGLAND. Rosy floral aromas are immediate as you pour, with a light and limey citrus bite on the palate and a balanced but obvious bitterness to finish.

**BREWDOG NANNY STATE 0.5%** £4.75

SCOTLAND. A hopped non-alcoholic beer, straight from way up north.

**PERONI 0%** £3.75

ITALY. Same iconic beer, now 0%.



# SOFT DRINKS

## OTHER SOFTS

Red Bull £4.20

Pepsi 330ml £2.90

Turner & Hardy Pure £3.65

Turner & Hardy Lively £3.65

Turner & Hardy Feisty £3.65

## CAWSTON

Sparkling Rhubarb Can £2.90

Sparkling Orange Can £2.90

Elderflower Lemonade Can £2.90

Ginger Beer Can £2.90

Apple & Pear Carton £2.10

Apple & Mango Carton £2.10

## HOT DRINKS

Americano 24 kcal £2.40

Cappuccino 121 kcal £2.70

Double Espresso 24 kcal £2.40

Flat White 97 kcal £2.70

Latte 121 kcal £2.70

Macchiato 48 kcal £2.05

Mocha 262 kcal £2.90

Hot Chocolate 238 kcal £2.95

Teapigs Pot of Tea, 24 kcal £2.25 Each

English Breakfast, Earl Grey Superfruit, Apple & Cinnamon, Peppermint,  
Chamomile, Lemon & Ginger

Try our Mini Sticky  
Toffee or Mini Chocolate  
Brownie and add a hot  
drink of choice all for £5



# SOFT DRINKS

FEVERTREE

FROM £2.65

Indian Tonic	Mediterranean Tonic
Naturally Light Tonic	Italian Blood Orange Soda
Aromatic Tonic	Mexican Soda
Elderflower Tonic	Premium Soda Water
Cucumber Tonic	Spiced Orange Ginger Ale
Sicilian Lemon Tonic	



## EAGER JUICE

	HALF PINT	PINT
Apple Juice	£3.15	£3.30
Orange Juice	£3.15	£3.30
Cranberry Juice	£3.15	£3.30
Tomato Juice	£3.15	£3.30

## BRITVIC

Pineapple Juice 200ml	£2.65
Grapefruit Juice 200ml	£2.70
Spicy Ginger Ale 200ml	£2.45
Bitter Lemon 200ml	£2.20
Ginger Beer 200ml	£2.45

## ON TAP

	CHILD	HALF PINT	PINT
Pepsi Max	£2.20 2.1 KCAL	£2.80 2.2 KCAL	£3.05 2.2 KCAL
Pepsi	£2.10 88.1KCAL	£2.80 122 KCAL	£3.05 174.2KCAL
Lemonade	£2.20 2.5 KCAL	£2.80 2.7 KCAL	£3.05 3.0 KCAL

## MINERALS

	330ML	750ML
Hildon Still or Sparkling	£3.00	£3.90



# PLOUGH INN

## COCKTAIL MENU

## COCKTAILS

### CLASSIC STRAWBERRY DAIQUIRI

Bacardi rum, Funkin strawberry daiquiri mix, Lime, Strawberries // £8.50

### CLASSIC MOJITO

Havana club rum 3YR, Funkin mojito mix, mint, lime // £9

### CLASSIC ESPRESSO MARTINI

Smirnoff black vodka, Funkin espresso martini mix, Tia maria, Espresso beans // £9

### NEGRONI

Martini Rosso, Tanqueray Gin, Campari served with orange slice // £10

### CLASSIC PORNSTAR MARTINI

Absolut Vanilla vodka, DOCG Moniet Prosecco, Funkin passionfruit martini mix // £10



## SPRITZ'S

### BLOOD ORANGE SPRITZ

Sipsmith Zesty Orange Gin paired with Fever Tree Italian Blood Orange Soda, Garnished with a slice of Orange // £7.95

### MOJITO SPRITZ

Westerhall Estate No.2 white rum with Fevertree Mexican lime soda, fresh limes wedges and a sprig of mint // £6.75

### ELDERFLOWER SPRITZ

White wine poured over a tall glass of ice, topped with Cawston Elderflower Press, garnished with a slice of lemon // £7.35



### RHUBARB & LEMON SPRITZ

Sipsmith Lemon Drizzle Gin paired with Cawston Press Sparkling Rhubarb, topped with a lemon slice and sprig of mint. // £8.35

### SIPSMITH SUMMER CUP

Based on Sipsmith Gin with added fruits, herbs and spices, including Earl Grey tea, Lemon Verbena and cucumber served with lemonade and summer fruits // £6.20

### APEROL SPRITZ

Aperol paired with Moinet Prosecco DOCG and a dash of soda, Garnished with fresh orange // £8



# GIN

## DRY

## FLAVOURED

**AUDEMUS PINK PEPPER** 44% | **£5.75**  
FRANCE

**BROOKLYN** 40% | **£5.45**  
LONDON

**DINGLE** 42.5% | **£5.60**  
IRELAND

**EALING GIN** 42% | **£5.45**  
EALING

**ELEPHANT LONDON DRY** 45% | **£5.60**  
GERMANY

**HAYMAN'S DRY** 40% | **£4.80**  
ENGLAND

**CHAPEL DOWN PINOT NOIR** 41.2% | **£5.45**  
ENGLAND

**PLYMOUTH** 41.2% | **£4.80**  
ENGLAND

**PORTOBELLO ROAD** 42% | **£4.80**  
ENGLAND

**SIPSMITH** 41.6% | **£5.05**  
ENGLAND

**TANQUERAY** 43.1% | **£4.30**  
ENGLAND

**JUST GIN** 41.3% | **£5.15**  
SWEDEN

**WHITLEY NEILL** 43% | **£5.20**  
**RHUBARB AND GINGER**  
ENGLAND

**WHITLEY NEILL** 43% | **£5.15**  
**BLOOD ORANGE**  
ENGLAND

**WARNER RHUBARD GIN** 40% | **£5.55**  
ENGLAND

**CHASE** 40% | **£5.65**  
**PINK GRAPEFRUIT & POMELO GIN**  
ENGLAND

**TANQUERAY** 41.3% | **£5.05**  
**FLOR DE SEVILLA GIN**  
ENGLAND

**WARNER ELDERFLOWER GIN** 40% | **£5.10**  
ENGLAND

**SIPSMITH ZESTY ORANGE** 40% | **£5.20**  
ENGLAND

**PINSTER RASPBERRY GIN** 37.5% | **£ 5.15**  
ENGLAND



# FEVER-TREE

TRY OUR RANGE OF FEVER TREE PRODUCTS, WITH YOUR FAVOURITE GINS!

AROMATIC TONIC / SLIMLINE TONIC / INDIAN TONIC / LEMON TONIC  
CUCUMBER TONIC / ELDERFLOWER TONIC / MEDITERRANEAN TONIC / MEXICAN LIME SODA  
BLOOD ORANGE SODA / PREMIUM SODA WATER

# OTHER SPIRITS

## BRANDY

## LIQUERS

**COURVOISIER** 40% | **£4.15**  
**HENNESSY XO** 40% | **£9.90**  
**REMY MARTIN** 40% | **£5.05**  
**MARTEL VS** 40% | **£4.15**

**ARCHERS SCHNAPPS** 18% | **£4.00**  
**BAILEYS** 17% | **£4.80**  
**COINTREAU** 40% | **£4.25**  
**DISARONNO AMARETTO** 28% | **£4.25**  
**DRAMBUIE** 40% | **£4.35**  
**GRAND MARNIER** 40% | **£4.45**  
**JAGERMEISTER** 35% | **£4.35**  
**KAHLUA** 20% | **£4.15**  
**MALIBU** 21% | **£3.90**  
**MIDORI** 20% | **£3.90**  
**PIMMS (& LEMONADE)** 25% | **£6.95**  
**SAMBUCA RAMAZZOTTI** 40% | **£4.15**  
**BLACK**  
**SAMBUCA RAMAZZOTTI** 38% | **£4.05**  
**WHITE**  
**SOUTHERN COMFORT** 35% | **£4.25**  
**TIA MARIA** 20% | **£4.20**  
**CHAMBORD** 16.5% | **£4.25**  
**SIPSMITH LONDON CUP** 29.5% | **£4.35**

## VERMOUTH

**CAMPARI** 24% | **£3.55**  
**CINZANO** 15% | **£3.70**  
**MARTINI BIANCO** 15% | **£3.50**  
**MARTINI EXTRA DRY** 15% | **£3.70**  
**MARTINI ROSSO** 15% | **£3.70**  
**PERNOD** 45% | **£4.15**

## PORT

50ML BOTTLE

**FULLER'S FINEST RESERVE** **£2.40 | £31.00**  
A Reserve Ruby Port specially made for Fuller's for many years now. Rich & ripe with great power & depth. Delicious with cheese or chocolate.

**TAYLOR'S TAWNY 10 YEAR** **£3.90 | £51.40**  
Mellow and elegant, combining delicate wood notes with rich aromas of mature fruit, it is bottled for immediate drinking.

**TAYLOR'S 2007 VINTAGE** **3.00 | £39.80**  
Stylish and racy, with a nose of dense blackcurrant and woodland fruit overlaid with discreet herbal nuances and scents of violet and rose petals.

**WARRE'S 1997 VINTAGE** **£8.40 | £95.75**  
A very deep crimson colour with rich fresh herbal aromas of gun cistus. Penetrating tastes of vibrant blackberry flavours but also very spicy with an abundance of tannins and sweetness.

**CROFT 2007 VINTAGE** **£5.70 | £110.85**  
Deep purple black with narrow magenta rim. The heady and powerfully aromatic nose displays a characteristic abundance of rich plump fruit and the exotic notes of eucalyptus and rock rose which are the hallmark of the Quinta da Roeda wines on which the blend is based.

# SPIRITS

## RUM

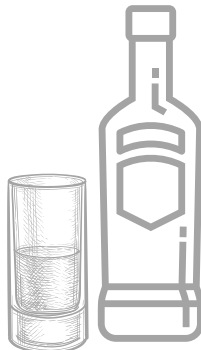
<b>BACARDI WHITE</b> CUBA	37.5%   £3.80
<b>CHAIRMANS RESERVE SPICED</b> ST LUCIA	40%   £4.65
<b>CHAIRMANS RESERVE WHITE</b> ST LUCIA	40%   £4.45
<b>CHAIRMANS RESERVE</b> ST LUCIA	40%   £4.45
<b>DIPLIMATICO RESERVA</b> VENEZUELA	40%   £5.60
<b>HAVANA 3YR</b> CUBA	40%   £3.80
<b>KRAKEN SPICED</b> CARIBBEAN	40%   £4.30
<b>LAMBS NAVY</b> CARIBBEAN	40%   £3.80
<b>WESTERHALL ESTATE RUM NO 3</b> GRENADA	40%   £4.00

## TEQUILA

<b>OLMECA GOLD</b> MEXCIO	38%   £3.90
<b>OLMECA SILVER</b> MEXICO	38%   £3.90
<b>PATRÓN ANEJO</b>	40%   £5.50
<b>PATRÓN SILVER</b>	40%   £5.40

## VODKA

<b>BELVEDERE</b> POLAND	40%   £5.00
<b>BLACK COW</b> ENGLAND	40%   £5.20
<b>CHASE MARMALADE</b> ENGLAND	40%   £5.15
<b>CHASE ORIGINAL</b> ENGLAND	40%   £5.15
<b>CHASE RHUBARB</b> ENGLAND	40%   £5.20
<b>CIROC</b> FRANCE	40%   £5.10
<b>GREY GOOSE</b> FRANCE	40%   £5.05
<b>KETEL ONE</b> NETHERLANDS	40%   £4.85
<b>SIPSMITH SIPPING VODKA</b> ENGLAND	40%   £5.00
<b>SMIRNOFF BLACK</b> RUSSIA	40%   £4.30
<b>ŻUBRÓWKA</b> POLAND	40%   £4.75
<b>ABSOLUT VANILLA</b> SWEDEN	38%   £4.75



# GIN

## CITRUS & ZEST

<b>AVIATION</b> AMERICA	42%   £5.60
<b>CHASE</b> ENGLAND	43%   £5.15
<b>HALF HITCH</b> ENGLAND	40%   £5.70
<b>MARTIN MILLER</b> ENGLAND	40%   £5.00
<b>PR. CORNELIUS'S BATHTUB</b> ENGLAND	43.3%   £5.45
<b>SHARISH BLUE MAGIC</b> PORTUGAL	40%   £5.50

## FLORAL

<b>BOODLES</b> ENGLAND	40%   £5.20
<b>JINZU</b> SCOTLAND	41.3%   £5.05
<b>TANQUERAY TEN</b> ENGLAND	47.3%   £5.70
<b>SILENT POOL</b> ENGLAND	43%   £5.60
<b>ROKU</b> JAPAN	43%   £4.80

## NON ALCHOLIC GIN

<b>SIPSMITH FREE GLIDER</b> ENGLAND	<0.5%   £2.60
--	---------------

## SWEET OLD TOM

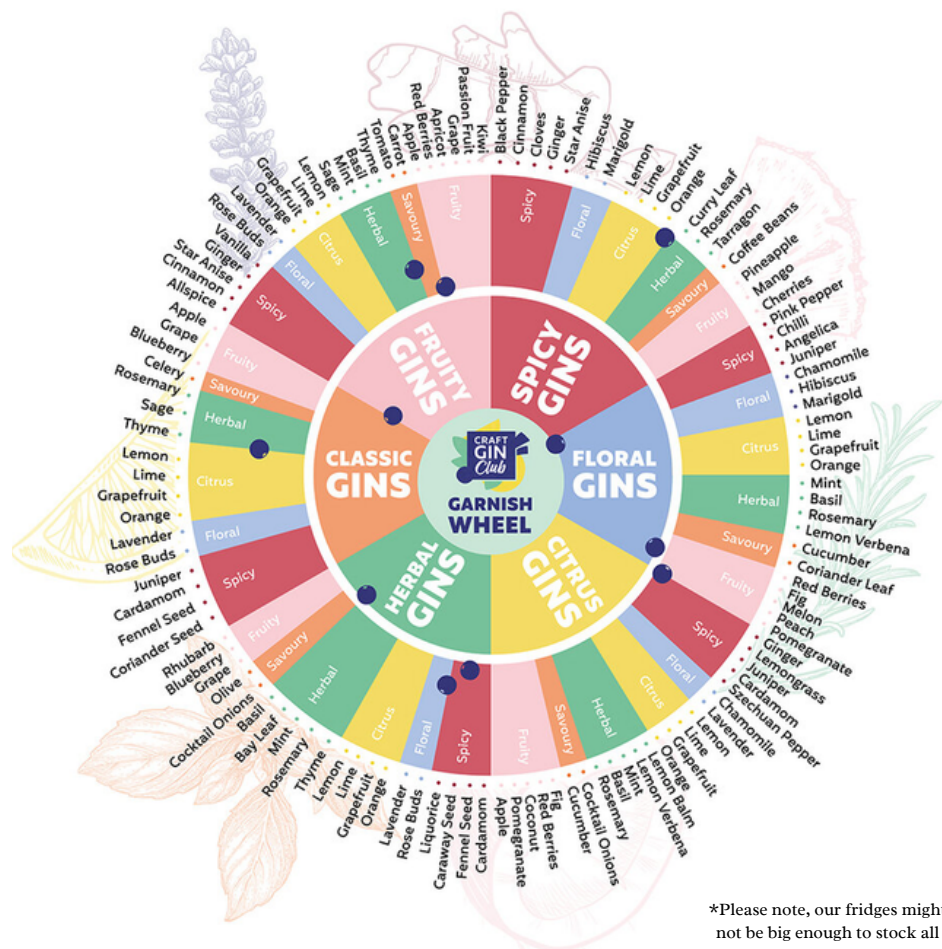
<b>GIN MARE</b> SPAIN	42.7%   £5.50
<b>HAYMAN'S OLD TOM</b> ENGLAND	40%   £4.80
<b>HENDRICK'S</b> SCOTLAND	41.4%   £5.15
<b>OPIHR</b> ENGLAND	40%   £5.45

## FRUITY

<b>MONKEY 47</b> GERMANY	47%   £5.55
<b>MONKEY 47 SLOE GIN</b> GERMANY	29%   £5.55
<b>SIPSMITH SLOE</b> ENGLAND	40%   £4.75



# LET THE GOOD TIMES Be Gin



\*Please note, our fridges might not be big enough to stock all these fruits...

## Fun Fact...

IN 1721, BRITAIN CONSUMED 3.5 MILLION GALLONS OF GIN.

# WHISKEY

## AMERICAN / CANADIAN

<b>JACK DANIELS</b> TENNESSEE	40%   £4.35
<b>GENTLEMAN JACK</b> TENNESSEE	40%   £4.95
<b>JACK DANIELS</b> <b>SINGLE BARREL SELECT</b> TENNESSEE	45%   £6.40
<b>JIM BEAM DOUBLE OAKED</b> KENTUCKY	43%   £4.55
<b>JIM BEAM</b> KENTUCKY	40%   £4.25
<b>KNOB CREEK</b> KENTUCKY	50%   £4.85
<b>MAKERS MARK</b> KENTUCKY	45%   £4.60
<b>WOODFORD RESERVE</b> KENTUCKY	45.2%   £4.75
<b>CANADIAN CLUB</b> TORONTO	40%   £4.55
<b>EAGLE RARE</b> KENTUCKY	45%   £4.90
<b>SAZERAC RYE</b> NEW ORLEANS	45%   £5.35

## IRISH

<b>BUSHMILLS BLACK BUSH,</b> BUSHMILLS	40%   £4.30
<b>BUSHMILLS ORIGINAL</b> BUSHMILLS	40%   £4.25
<b>JAMESON</b> DUBLIN	40%   £4.25

## JAPANESE

<b>HIBIKI</b> SHIMAMOTO	43%   £6.40
----------------------------	-------------

## SCOTCH

<b>AUCHENTOSHAN</b> CLYDEBANK	40%   £4.85
<b>AUCHENTOSHAN 12 YEAR</b> CLYDEBANK	40%   £4.85
<b>BALVENIE DOUBLE WOOD</b> DUFFTOWN	40%   £4.90
<b>CHIVAS REGAL</b> SPEYSIDE	40%   £4.55
<b>COMPASS BOX HEDONISM</b> SCOTLAND	43%   £5.80
<b>GLEN MORAY</b> <b>PORT CASK FINISH</b> SPEYSIDE	40%   £5.45
<b>GLENFARCLAS 105°</b> SPEYSIDE	60%   £6.40
<b>GLENFIDDICH</b> DUFFTOWN	40%   £4.85
<b>GLENKINCHIE</b> LOTHIAN	43%   £4.90
<b>GLENLIVET FOUNDERS</b> <b>RESERVE</b> SPEYSIDE	40%   £4.85
<b>GLENMORANGIE</b> ROSS SHIRE	40%   £4.90
<b>ISLE OF JURA</b> ISLE OF ISLAY	40%   £4.85
<b>JOHNNIE WALKER BLACK</b> KILMARNOCK	40%   £4.65
<b>JOHNNIE WALKER RED</b> KILMARNOCK	40%   £3.90
<b>LAGAVULIN</b> ISLE OF ISLAY	43%   £5.30
<b>LAPHROIG</b> ISLE OF ISLAY	40%   £4.90
<b>MACALLAN DOUBLE CASK 12YR</b> SPEYSIDE	40%   £6.40
<b>MONKEY SHOULDER</b> SPEYSIDE	40%   £4.45
<b>OBAN</b> ARGYLL	43%   £5.00
<b>TALISKER</b> ISLE OF SKYE	45.8%   £4.95